

Business Benefits

New web site launched

Bowyer Bryce have launched their new web site.

The site includes information for business on property related matters with details of services and the facility to obtain more detailed guidance if required.

The property search area has listings and photographs of all available properties and now includes access to full property details.

Back issues of *Business Benefits* are also available online with a very useful index.

Director Steven Murray is delighted with the new site. "The site is packed with information and is very user friendly," he said.

"We have already received some very complimentary feedback from clients and other businesses who have been using the site to obtain information on property matters, details of our services and properties



we are marketing".

Other new features are being developed and tested and will be added early next year.

Explore the site at www.bowyerbryce.co.uk

Dennis Bowyer

It is with sadness that we report the death of Dennis Bowyer in July at his new home in Evesham.

Dennis was the great nephew of Alfred Bowyer, the founder of Bowyer & Bowyer, and joined the Partnership just after the Second World War becoming a consultant in 1989 and taking retirement in 1994. Whilst he led a varied career he was most well known and respected for the furniture and specialist auctions he held in Enfield Town.

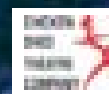
Dennis will be greatly missed by his family and his many friends and former colleagues.

Season's Greetings

Instead of sending Christmas cards this year Bowyer Bryce are making a donation to the Chicken Shed Theatre Company.

Chicken Shed is the UK's largest inclusive theatre company and welcomes over a thousand children and young people through the doors of its purpose built theatre complex on a weekly basis. In addition to their work at the theatre Chicken Shed also runs a national outreach programme establishing new inclusive community theatre companies for young people across the UK. Chicken Shed's work develops self confidence and self esteem in young people. For more information see www.chickenshed.org.uk

We therefore take this opportunity of wishing our clients, business associates and fellow professionals a very happy Christmas and a healthy and prosperous 2006.



New Enfield showroom for Honda



Full story inside >

2 - 3 A snapshot of the complete property service
3 New Honda showroom

4 New appointments
Charity night raises £10,000
New developments



A snap shot of the complete property service



Acquisition

1 Liskeard, Cornwall
Investment acquisition and management for private property company.

3 Enfield
42,500 sq ft 1960's office building on a 1.08 acre site acquired on behalf of Telford Homes plc for residential redevelopment.

Sales and Lettings

2 Enfield
Bowyer Bryce have advised Canmoor Developments Ltd on the acquisition of a 4 acre site in Crown Road formerly occupied by Yoplait and have now arranged the pre letting of a new 100,000sq ft distribution warehouse and offices to be constructed on the site.

4 Edmonton, N18
191,000 sq ft on 14 acres former BOC complex let for property company client.
(Joint agent Holley Blake)

5 Enfield Town
Planning application for change of use and letting of entire building to Nationwide Building Society on behalf of private client.

6 London E3
Acquisition advice and letting of 16,395 sq ft food processing warehouse on 0.90 acre site.

Public Sector Consultancy

7 London E17
Strategic and valuation advice on former cinema.

Rating

8 Southend on Sea, Essex
Appeal for night club operator.



9

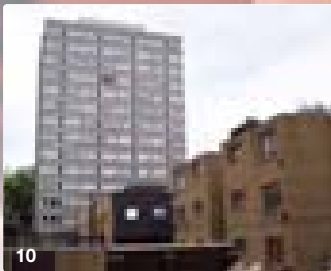
New Enfield showroom for Honda

Great Cambridge Road Enfield

Last year Bowyer Bryce sold the former Fryer Brothers site, adjacent to British Car Auctions, to Honda Motor Europe who have now completed their new state of the art showroom and workshops.

Honda's UK Property Manager Gordon Hunt is delighted with their latest acquisition. "The property underlines Honda's commitment to it's customers within the Greater London district." Hunt said. "We were pleased with the assistance provided by Bowyer Bryce in securing the planning consent enabling the development of the facility."

Nigel Lawrence Partnership advised Honda.



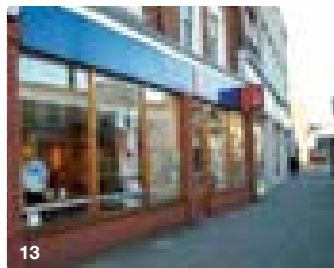
10



11



12



13



Valuations

9 Battersea, London SW11
Valuation of leasehold interest for banking client.

10 Royal Free Hospital, London NW3
Transfer of NHS assets to our social housing group client.

Rent reviews

11 North London
Main Post Office for Local Authority client.

12 Bristol
Industrial warehouse unit on behalf of tenant.

Management

13 Enfield
Acquisition, valuation and management for property company client. Planning application for conversion of upper parts and project management.

David Sinden joins Bowyer Bryce

David Sinden, BA MRICS IRRV, has joined Bowyer Bryce as a senior surveyor.

David qualified as a Chartered Surveyor in 1989 and has joined Bowyer Bryce after spending many



years with a national commercial practice of surveyors based in North London. David is also a Member of the Institute of Revenues Rating & Valuation. Much of David's work in recent years has been in undertaking valuations for commercial lending, landlord & tenant negotiations and rating.

Charity night raises £10,000

Bowyer Bryce were delighted to have been Gold Sponsors at a recent charity greyhound meeting held at Walthamstow Stadium on behalf of the National Society for the Prevention of Cruelty to Children.

An evening of racing sponsored by local businesses and others helped raise over £10,000 for the charity and was considered a great success by all.

Ray Arrowsmith (right) presents the prize to the owner of 'Sarah Loves', the winner of The Bowyer Bryce Classic.



Trevor Clayden becomes consultant

Trevor Clayden has retired from full time practice although he remains a consultant with Bowyer Bryce dealing principally with residential development land.

Trevor was for many years a Partner with Sturt & Tivendale, subsequently to become Black Horse Agencies.

In 1998, after a time of practising under his own name, Trevor joined Bowyer Bryce as specialist consultant in retail property and residential development sites.

Everyone at Bowyer Bryce will miss his full time involvement. "Trevor has forged a considerable reputation as a very knowledgeable and experienced commercial surveyor," said Director John Bryce. "His experience and expertise has helped to develop the practice and better serve our clients and we are delighted that Trevor is continuing with us as a consultant."

Trevor is also a very popular figure in the office, frequently holding court and keeping colleagues entertained with his anecdotes and lectures on life and the universe.

A lunch was held at West Lodge Park Hotel to celebrate his retirement which was



John Bryce (left) presents Trevor with a collage of some of his most infamous deals signed by friends and colleagues.

attended by colleagues and many of Trevor's friends and associates.

We are sure that Trevor's numerous clients and contacts that he has built up will join us in offering him and his wife, Marion, every good wish in their planned retirement to the West Country.

New developments

We are pleased to announce the launch of two new industrial and warehouse developments.

Phase I Valley Point Jeffreys Road, Enfield

A development by GLE Developments Ltd of 19 units totaling 50,440 sq ft ranging in size from 1,448 to 4,333 sq ft.

Full plans, specifications, sizes and prices will be available shortly with completion expected towards the end of 2006. The units will be available on a freehold basis and interested parties should make sure that they register their interest as soon as possible as we anticipate very strong demand.

Bilton Way, Enfield

A development by Mayfield Projects Ltd of 5 new units totaling 22,350 sq ft. ranging in size from 4,200 sq ft although at this stage consideration can be given to one single unit of about 27,500 sq ft. Completion of the scheme is expected in autumn 2006. The units will be available on a freehold or leasehold basis.

For further information on either development, please contact Ian Harding or Adele Boanson on 020 8370 2535



CHARTERED SURVEYORS
COMMERCIAL PROPERTY CONSULTANTS

96 SILVER STREET, ENFIELD EN1 3TW
Tel: 020 8367 5511 | Fax: 020 8366 0818
mail@bowyerbryce.co.uk
www.bowyerbryce.co.uk

The content of this newsletter is intended to be of general interest and readers are advised not to rely upon it without seeking professional advice relating to their particular circumstances.